

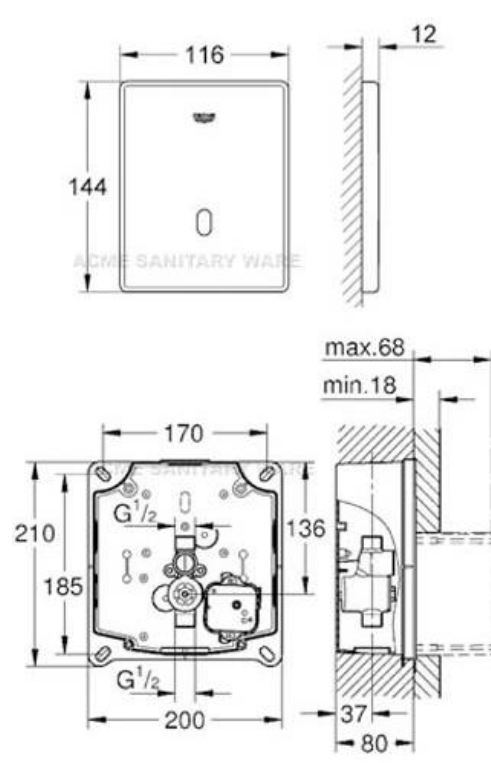




PROJECT		REF		REV	ITEM CODE	
LOCATION		DATE			PAGE	

SANITARY WARE SPECIFICATION SHEET

Item Descriptions	GROHE (Germany) Tectron Skate Infra-red electronic for Urinal with GROHE Rapido U Mounting Box (DC Supply) ; nominated flow rate 1.2 L/cycle in WELS Grade 1 ; Registration No. 1U 20-0020	<div>Illustration/ Drawing</div> <div></div> <div></div>
Dimensions	L116 x W12 x H144 mm	
Model	37324SD1 (Infra-red Electronic) 38787000 (Mounting Box)	
Finish	Stainless Steel	
Manufacturer	GROHE Limited	
Supplier	Acme Sanitary Ware Co. Ltd Mr. Eric Wong/ Mr. Don Yuen	<div></div>
Contact Tel/Fax	(852) 2388-7171 / (852) 2710-8012	
E-mail	acme@acmesanitary.com.hk	
Website	www.acmesanitary.com.hk	
<div><div>37324SD1 (Infra-red electronic) Tectron Skate Infra-red electronic for urinal with infrared sensor for bi-directional communication for monitoring, configuration and service purpose 6 V lithium-battery, type CR-P2 battery lifetime: approx. 7 years (150 actuations a day) cartridge with solenoid valve and dirt strainer front plate 116 x 144 mm flow pressure min 0.5 bar operating pressure max 10 bar multistage battery status display 7 pre-set programs: auto flush cleaning mode pre-flush on/off additional functions and precise settings by remote control 36 407 adjustable flow time by hand or remote set for final installation for Rapido U or Rapido UMB CE approved</div><div>38787000 (Mounting Box) GROHE Rapido UMB roughing-in set for urinal for manual actuation or Tectron infra-red electronic 6 V water group with stop valve flow pressure min 0.5 bar operating pressure max 10 bar flush aid functional unit checked ex factory water supply connections ½" outer thread installation box with gasket fixing points for dry cladding and masonry-in shortable inspection shaft incl. protection during construction phase for sets for final installation with dimensions 116 x 144 mm Wait time after flushing 5s Minimum delay (2 – 10 s, adjustable) 7s Detection zone according to Kodak Gray Card, grey side, 8x10", landscape: 75 cm Type of protection - Fitting IP 59K - Transformer IP 55</div></div>		

* All information of the above is for the reference only. No prior notice is made if any changes.

註冊號碼 (Registration No.):

1U 20-0020




自願參與用水效益標籤計劃 - 小便器用具
Voluntary Water Efficiency Labelling Scheme - Urinal Equipment



茲證明
This is to certify that

將下列小便器用具在本計劃內註冊：
has registered the following urinal equipment under this scheme:

牌子 / Brand	:	Grohe
型號 / Model	:	38.787.000 + 37.324.SD1
種類 / Category	:	1
原產地 / Country or Region Origin	:	Germany

在用水效益標籤上展示的標誌 <i>Symbolic Presentation on the Water Efficiency Label</i>	:		滴水點 <i>Water droplet(s)</i>
用水效益級別 <i>Water Efficiency Grade</i>	:	1	
沖水量 <i>Water Flush Volume</i>	:	1.2	公升/循環 <i>litres/cycle</i>

簽發日期:
Date of Issue: 4 September 2020



水務署
Water Supplies Department



水務署署長(葉哲奇代行)
for Director of Water Supplies

* 上述小便器用具具有智能功能，並且能達至額外節省用水。

The above urinal equipment is operated with a smart demand operation to achieve additional water saving.



水務署

Water Supplies Department

香港灣仔告士打道七號入境事務大樓

Immigration Tower, 7 Gloucester Road, Hong Kong



@wsd.gov.hk

4367

圖文傳真
Facsimile

2824 0578

in WSD 3321/15 Pt.1 T/J(8)

4 February 2015



Dear Sir,

Approval of "GROHE" Urinal Sensor Flush Valves

Your letters ref. WRC/0937 to WRC/0940 all dated 5 January 2015 refer.

Having considered test reports ref. J17738A, J17738B, J17738D and J17738E all issued on 24 December 2014 by the Nutek Systems, Ltd., this Authority accepts that the fittings described below comply with, and their use when correctly installed does not contravene, the Waterworks Ordinance and Regulations.

Name of Manufacturer: Grohe AG

Country of Origin: Germany

Brand: Grohe

Details of Fittings: 1/2" Urinal flush valve concealed

Models: 37321SD1+37338000, 37321001+37338000,
37324SD1+38787000, 37324001+38787000

Proviso: As the fittings have not been tested for use in contact with water intended for human consumption, the fitting can only be used in flushing water plumbing system.

This Authority hereby permits the use of the above fittings in flushing water plumbing systems subject to full adherence to Waterworks installation requirements. In particular, you are required to draw your customers' attention to the following requirement-

"Installation of filters before flushing valves is required. Without the filters, the flushing valves are liable to leak. The installed filters need frequent inspection and cleaning to maintain flushing supply. Normally only public toilets with good management system for maintenance would be considered."

"A stop cock or gate valve must be installed at the upstream of the fitting for manual isolation of water supply."

"The design flushing volume of the flushing valves should be compatible with the toilet bowl to ensure that effective clearance can be achieved by a single flush of water."

"Flushing valves should be used within the range of working pressures specified by the manufacturer." AND

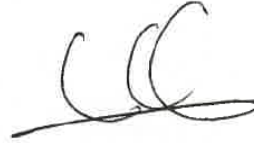
"Installation of electronic opening and closing sanitary tapware should also comply with the requirements of Electrical & Mechanical Services Department."

A condition of this acceptance is that the fittings to be installed shall be replicas of the samples as certified by the testing agent mentioned above and without modifications. This acceptance may be withdrawn at any time if the standard of the fittings installed fails to meet that of the approved samples or if the fittings are found to be unsuitable for use in flushing water plumbing systems.

For the use of the fittings in any project, the Acceptance Reference Number at the bottom of this letter must be quoted as a means of identification of acceptance of the fittings by this Authority.

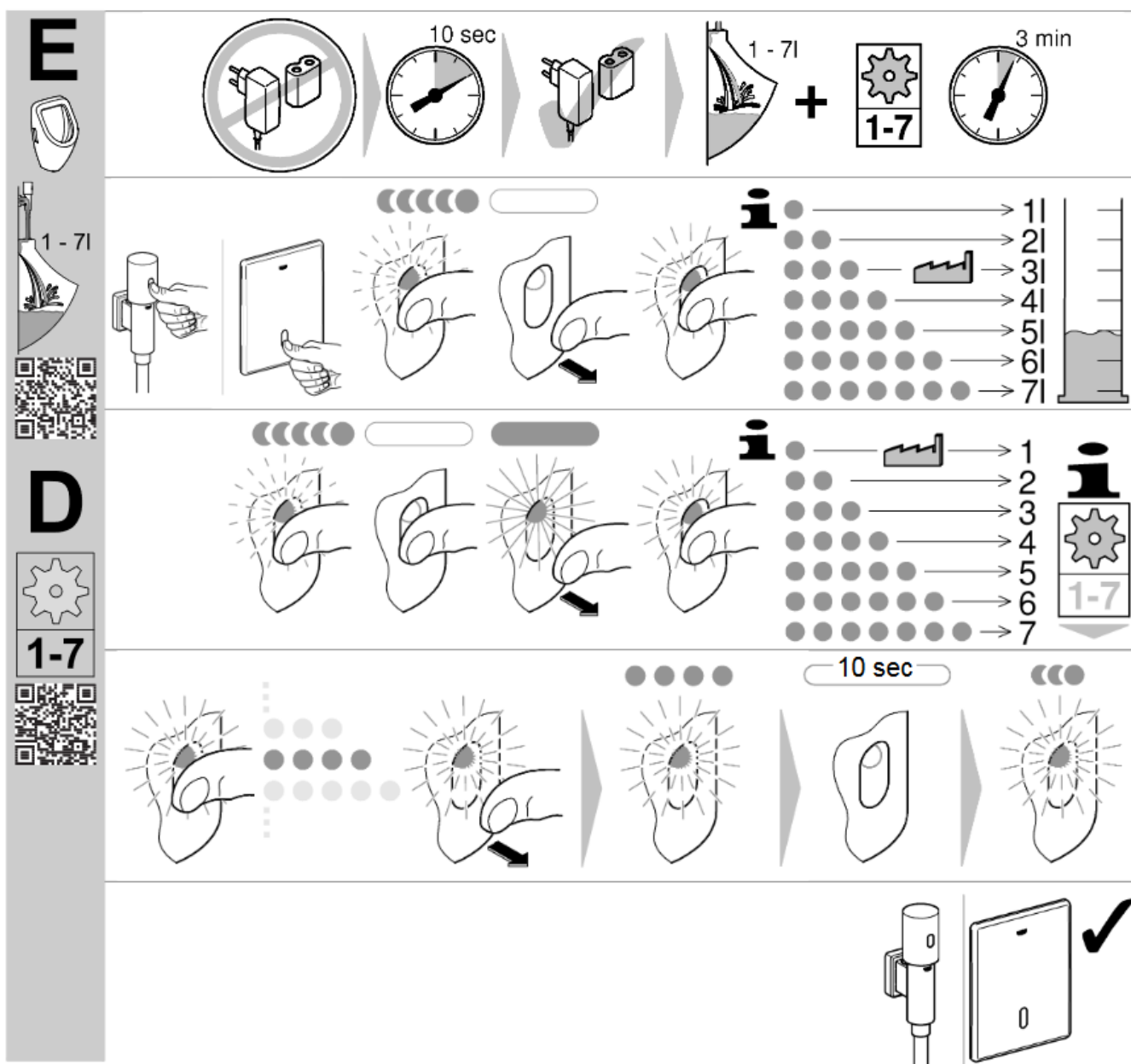
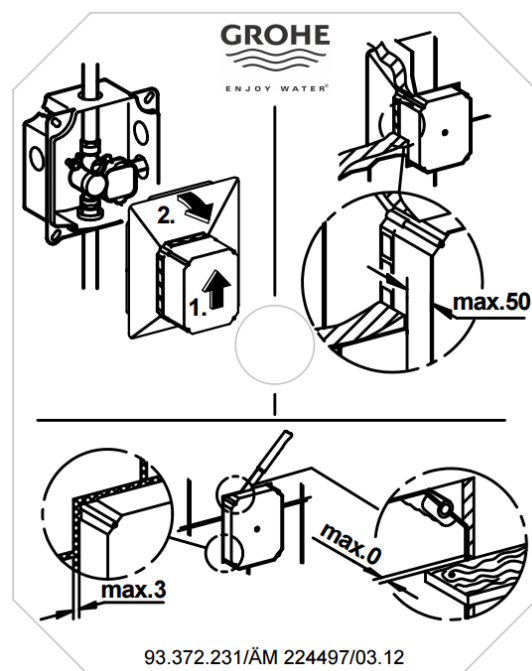
Should you have any enquiries, please contact our Engineer Mr. Ken H
CHAN at tel. no. 2829 4453.

Yours faithfully,

A handwritten signature in black ink, consisting of three stylized, overlapping loops followed by a horizontal stroke.

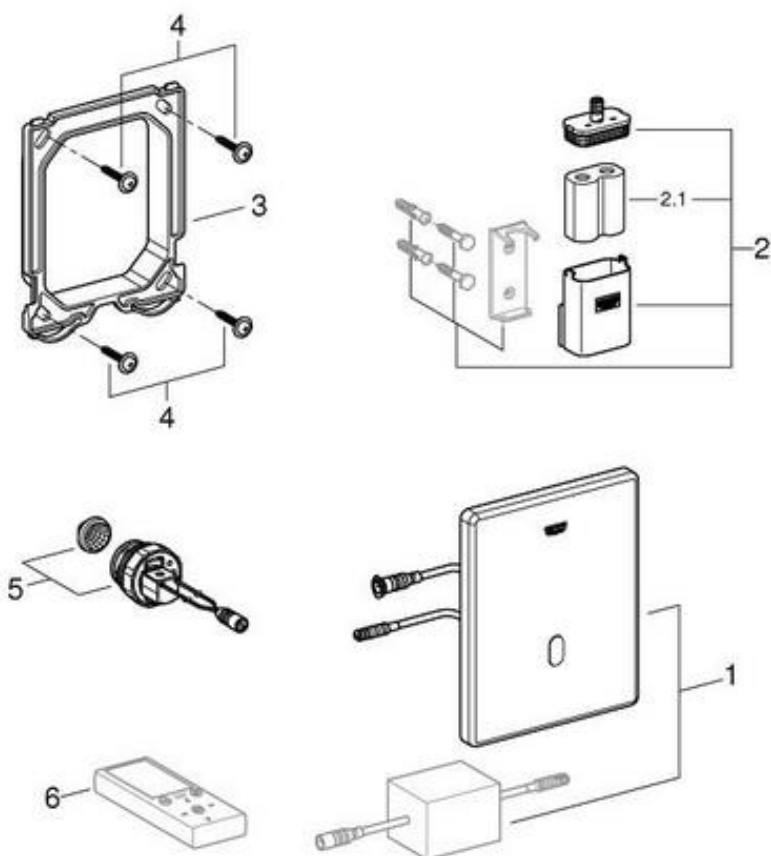
(K K LI)
for Water Authority

c.c. WSD 3321/1/82] - without catalogue
 E/CS(TS)1]





SELECT SPARE PART:



Pos.-nr.	Prod. Description	Order-nr.
1	Top plate	42452SD0
2	Battery housing with battery	42393000
2.1	Battery	42886000
3	Frame	66845000
4	Screw dia. 4x52 mm	6636200M
5	Solenoid valve	66859000
6	Remote control	36407001*

* Optional accessories